

TIFFIN

2024

CLASS-A

PHAETON





What's New Summary - Phaeton

WHAT'S NEW

- Cummins® L9 450 HP Diesel Engine Standard on All Floor Plans
- Freightliner® XCR XSH Raised Rail Rear Engine Diesel Chassis Now Available on 37 BH
- PowerGlide® XSH Rear Engine Diesel Chassis Option Now Available on 37 BH
- Tide Pool and Stallion Treated Fabric Suites
- Tatami Mat and Rice Paper Ultraleather
- Black Truffle, Platinum and Sandstone Cabinetry
- Sweden Alps and Editorial Volakas Floor Tile
- Starlink Pro Option
- Electric Front Overhead Drop-Down Bunk Option
- Redesigned Ceiling Treatment
- White Ceiling Panels
- Firefly Integrations Eclipse Module
- Front Sway Bar on PowerGlide® Chassis

LUXURIOUS TRAVEL AWAITS.

Introducing the new 2024 Tiffin Phaeton. Incredibly luxurious and equipped with an abundance of upscale amenities as standard features, the Phaeton remains a customer favorite. And no wonder. Whether you end up relaxing, cooking, or sleeping, you'll discover smartly engineered touches that make every trip a stylish adventure. The Phaeton is available in multiple floor plans, finishes, and décors and offers a stunning degree of high-end elegance and comfort yet remains well within reach. Let every journey be an unforgettable one in your new 2024 Phaeton.

Top to bottom: Dinette with Chairs shown with Black Truffle Cabinets, Kitchen Area shown with Shadow Cabinets.



Premium Paint System



Our eight-step, full-body paint system features premium grade paints sealed with four layers of clear coat with ultraviolet protection. An additional layer of high-performance film protects the front of the coach and select areas.

Our Generation 10, Generation 11, and Midnight Edition premium paint schemes now give you 15 different ways to make your 2024 Phaeton your very own. To learn more, visit tiffinmotorhomes.com.

GENERATION 10



G10 MAROON CORAL



G10 EURO BLUE



G10 FIRE OPAL



G10 FROSTED GRANITE

GENERATION 11



G11 MAROON CORAL



G11 EURO BLUE



G11 FIRE OPAL



G11 FROSTED GRANITE

Premium Paint System

GENERATION 10



G10 NASA



G10 SUNLIT SAND



G10 WHITE MAHOGANY

GENERATION 11



G11 NASA



G11 SUNLIT SAND



G11 WHITE MAHOGANY



MIDNIGHT EDITION

Floor Plans



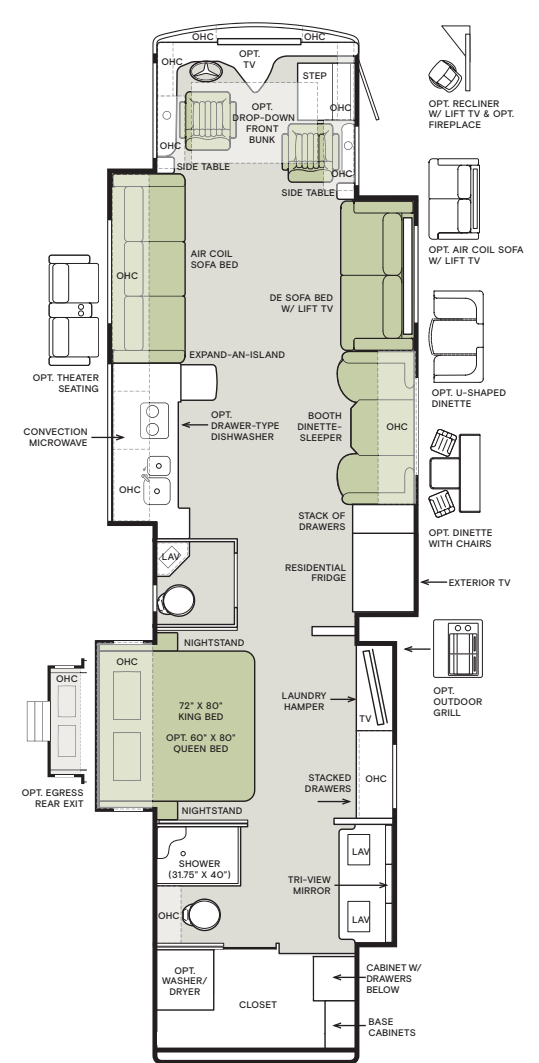
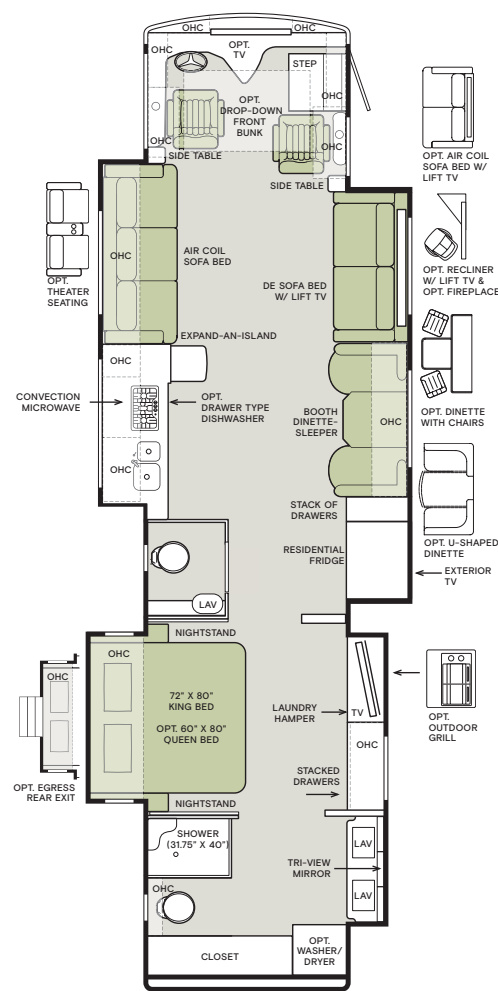
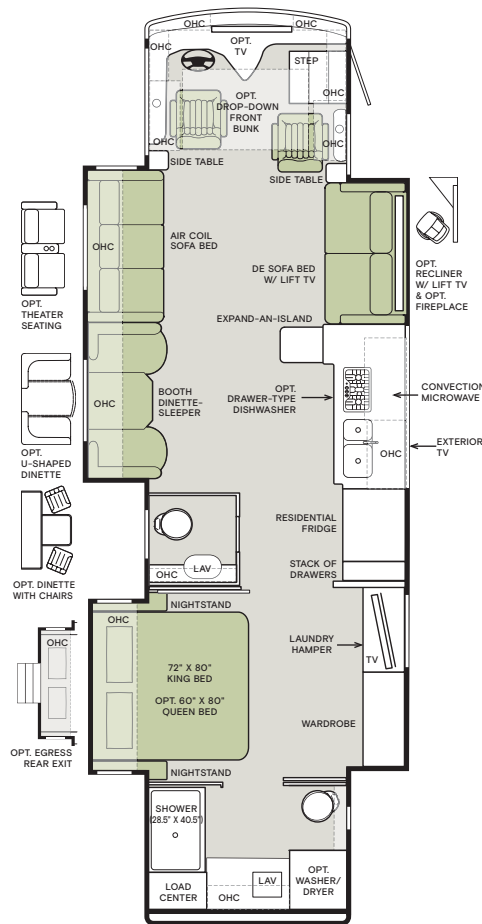
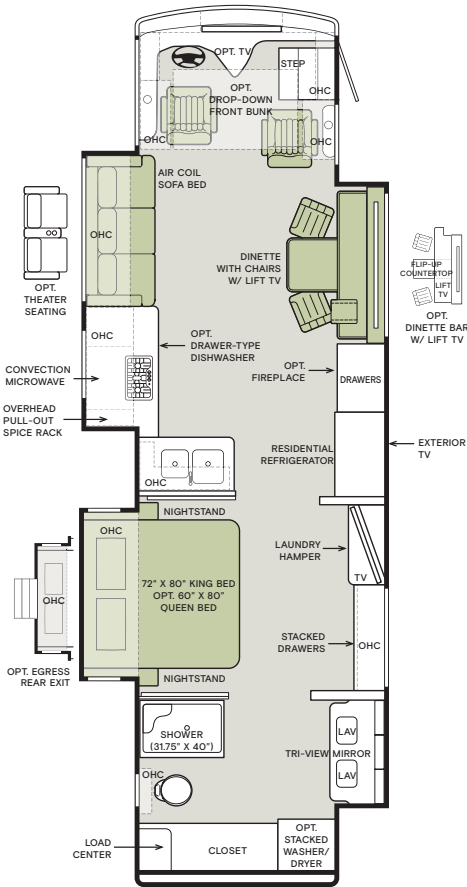
The design of every Phaeton floor plan must meet four essential criteria: Maximum space, Optimal organization, Relaxation plus, and Elegant atmosphere. Tiffin's MORE Plans offer your family the most comfortable layout for life on the road.

35 CH

37 BH

40 IH

44 OH



If optional furniture combinations are selected, window locations may vary from diagram shown.

All options may not be available in every model. Because of progressive improvements and specifications, standard and optional equipment are subject to change without notice or obligation.

For a complete and up-to-date list of available options and specifications, visit tiffinmotorhomes.com.

Interior Décor

Make your experience on the road all your own. Express yourself by choosing interior appointments such as cabinet finishes, flooring, and décor packages for every part of your motorhome. In the 2024 Phaeton, you'll be able to travel in style no matter where you go.



MR. BOB TIFFIN RECOMMENDS

**TIDE POOL
DÉCOR PACKAGE
WITH SANDSTONE CABINETS
AND EDITORIAL VOLAKAS
FLOORING.**

CABINETS

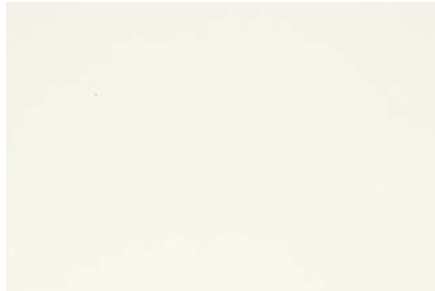


SHADOW

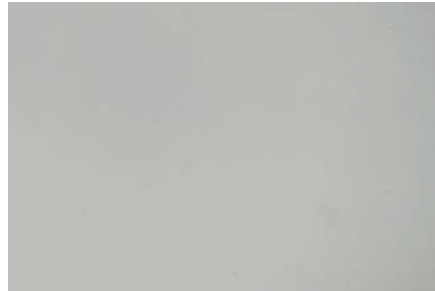


SANDSTONE

NEW

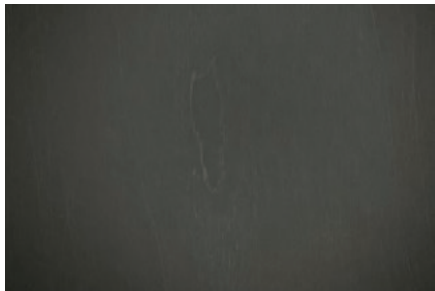


WHITE LINEN



PLATINUM

NEW



BLACK TRUFFLE

NEW

FLOORING



SWEDEN ALPS
Glazed Porcelain Tile

NEW



EDITORIAL VOLAKAS
Glazed Porcelain Tile

NEW

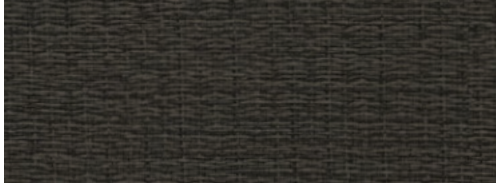
Because of progressive improvements and specifications, standard and optional equipment are subject to change without notice or obligation. For a complete and up-to-date list of available options and specifications, visit tiffinmotorhomes.com. Colors of interior décor options shown may vary from colors on actual product.

Interior Décor Packages

CAPRI



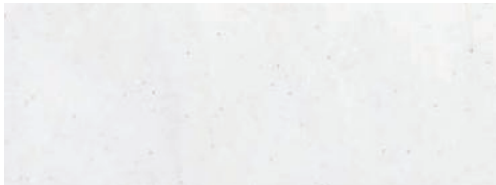
ULTRALEATHER® TATAMI MAT



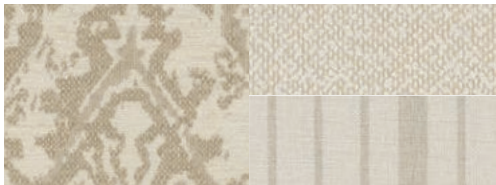
WINDOW TREATMENT



BACKSPLASH



COUNTERTOP



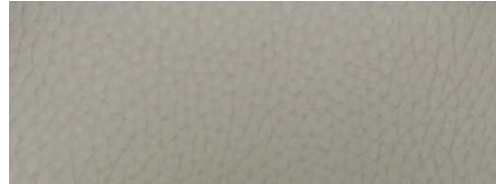
LIVING ROOM



MASTER SUITE

TIDE POOL

NEW



ULTRALEATHER® RICE PAPER



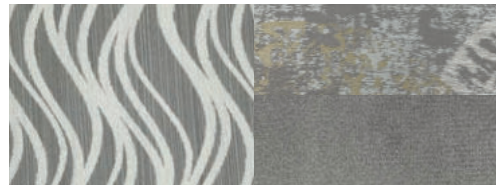
WINDOW TREATMENT



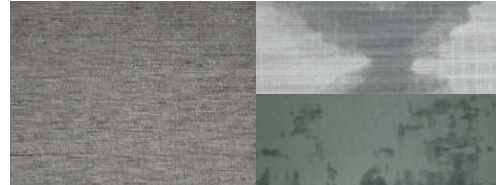
BACKSPLASH



COUNTERTOP



LIVING ROOM



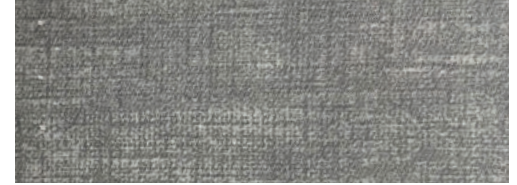
MASTER SUITE

STALLION

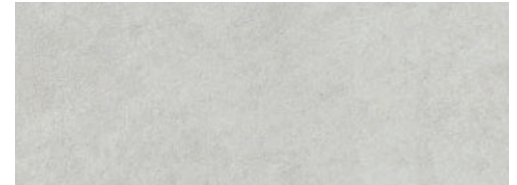
NEW



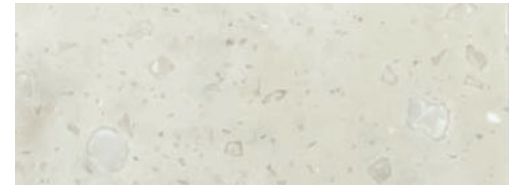
ULTRALEATHER® RICE PAPER



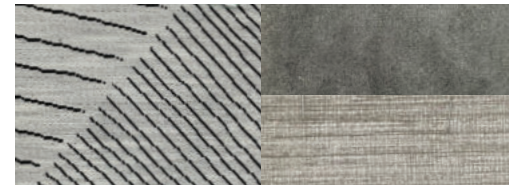
WINDOW TREATMENT



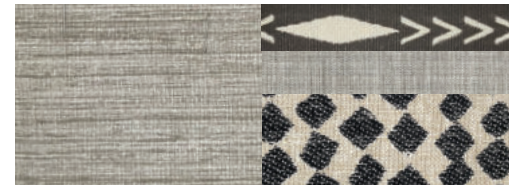
BACKSPLASH



COUNTERTOP



LIVING ROOM



MASTER SUITE

Specifications, Features, and Options

KEY : S : Standard Feature | O : Optional Feature; Additional costs may apply | D : Dependent; Availability is dependent on selection of another option | - : Not Available

WEIGHTS AND MEASURES	35 CH	37 BH	40 IH	44 OH
DIMENSIONS				
Overall Length (approx.) ¹	37' 9"	38' 2"	41' 4"	45"
Wheel Base ²	222"	234"	266"	310"
Overall Width ¹	101"	101"	101"	101"
Overall Height ³ UPDATED	13' 3"	13' 3"	13' 3"	13' 3"
Minimum Garage Height	14'	14'	14'	14'
Interior Height	83"	83"	83"	83"
Interior Width	96"	96"	96"	96"
Square Footage (approx.) ⁴	375	375	405	440
Basement Storage (cubic feet, approx.) ⁵ UPDATED	131	162	232	232
WEIGHT LIMITS				
GAWR—Front (pounds)	15,660	15,660	15,660	15,660
GAWR— Tag Axle (pounds)	-	-	-	10,000
GAWR—Rear (pounds)	24,000	24,000	24,000	20,000
GVWR (pounds)	39,660	39,660	39,660	45,660
Maximum Trailer Weight (pounds) ⁶	10,000	10,000	10,000	10,000
Hitch Rating (pounds)	10,000	10,000	10,000	10,000
GCWR (pounds)	49,660	49,660	49,660	55,660
CAPACITIES				
Fuel Tank (gallons)	100	100	100	100
DEF Tank (gallons) - PowerGlide® Chassis ⁷	10	10	10	10
DEF Tank (gallons) - Freightliner® Chassis ⁷	13	13	13	13
Fresh Water (gallons)	100	100	100	100
Grey Water (gallons)	100	100	100	100
Black Water (gallons)	55	55	55	55
LPG Tank (gallons) ⁸	35.7	35.7	35.7	-
QUANTITIES				
Number of Slideouts	3	3	4	4
Sleeping Capacity ⁹	2 to 4	2 to 6	2 to 6	2 to 8
Sleeping Areas ⁹	1 to 3	1 to 5	1 to 5	1 to 5
Seat Belts ⁹	4	4 to 8	4 to 8	4 to 10
Seating Capacity ⁹	6	7 to 10	7 to 10	7 to 12

¹ The approximated coach width and length does not include side view mirrors and rear ladders.

² On tag axle coaches, measurement is taken from the center of the steer axle to the centerline between the drive and tag axle.

³ 37 BH's overall height increased from 12' 7" to 13' 3" due to new XSH Chassis.

⁴ Square footage was calculated with the slide-outs fully extended.

⁵ 37 BH's basement storage increased from 122 to 162 cubic feet due to new XSH Chassis.

⁶ Maximum trailer weight is dependent on the loading and towing variables which include the GVWR, GAWR, and GCWR, as well as adequate trailer brakes.

⁷ Diesel Exhaust Fluid (DEF) is the active component used in Selective Catalytic Reduction (SCR) engines to reduce nitrogen oxide emissions by 90% to meet EPA standards.

⁸ LPG tank can only be filled to 80% capacity.

⁹ Dependent on furniture and dinette options.

CHASSIS AND DRIVETRAIN

- Cummins® L9 450 HP Diesel Engine with 1,250 lb-ft Torque ¹ **NEW**
- Two-wheel Drive
- Allison® 3000 MH 6-speed Automatic Transmission with Lock-up Torque Converter
- Front and Rear 295/80R 22.5 Tires
- (2) 12-Volt Flooded Lead-Acid Chassis Batteries
- Hydraulic Leveling Jacks with Control Panel
- ZF Independent Front Suspension
- Rear Radiator
- Front Disc Brakes and Rear Drum Brakes
- Full Air Brake System with Automatic Slack Adjusters
- Three-stage Compression Brake
- Manual Parking Brake
- Driver and Passenger Side Fuel Fill
- Tire Pressure Monitoring
- Adaptive Cruise Control
- Automatic Traction Control
- Collision Mitigation with Forward Warning and Active Braking
- Electronic Stability Control

CHASSIS AND DRIVETRAIN OPTIONS		35 CH	37 BH	40 IH	44 OH
Chassis UPDATED	PowerGlide® XSH Raised Rail Rear Engine Diesel Chassis ²	S	O	-	-
	Freightliner® XCR Raised Rail Rear Engine Diesel Chassis ²	-	O	S	S
Alternator	210-Amp Alternator ³	S	D	-	-
	240-Amp Alternator ⁴	-	D	S	S
Wheels	Aluminum Wheels ⁵	D	D	D	D
	Black Aluminum Wheels ⁶ NEW	D	D	D	D
Front Sway Bar on PowerGlide Chassis ³ NEW	S	D	-	-	
Rear Suspension	Freightliner® V-Series V-Ride Rear Suspension ⁴	-	D	S	S
	Reyco® Granning® Air Ride Rear Suspension ³	S	D	-	-
Shocks	Custom Tuned Sachs® Shock Absorbers ⁴	-	D	S	S
	Custom Tuned Koni Shock Absorbers ³	S	D	-	-
Steerable Tag Axle	-	-	-	S	

¹ Peak horsepower achieved at 2,100 RPM. Peak torque achieved at 1,400 RPM. Now standard on all floorplans.

² Option now available on 37 BH.

³ Peak horsepower achieved at 2,100 RPM. Peak torque achieved at 1,400 RPM.

⁴ Standard on PowerGlide® Chassis option. Not available on Freightliner® Chassis option.

⁴ Standard on Freightliner® Chassis. Not available on PowerGlide® Chassis option.

⁵ Standard with all exterior color packages, excluding Midnight Edition.

⁶ Standard with Midnight Edition exterior color package. Not available with other exterior color packages.

CONSTRUCTION

- Seamless One-piece Gel-coat Fiberglass Molded Roof Cap
- 5 1/4" Formed Roof Insulation
- Tubular Aluminum Roof Skeleton Frames
- Extraordinaire™ Ducted Air Cooling System
- One-piece Molded Gel-coat Fiberglass Front and Rear Caps
- Steel Cockpit Overhead Support Frame
- Crane® Composites Noble® Select All-Composite Exterior Sidewalls
- Tubular Aluminum Wall Skeleton Frames
- High-performance Thermal Insulation in Sidewalls
- Engineered Wood Sub-flooring
- Laminated Elevated Sub-Flooring with 2 3/4" Thick Thermal Insulation
- Steel Basement Construction
- Rust Protective Undercoating
- Extra Storage Phaeton (XSH) Chassis Construction ¹ **UPDATED**

¹ Floor is constructed flush with top of rear engine. Allows for more basement storage and eliminates step in rear bedroom or bathroom walking area. Now available on 37 BH.

Specifications, Features, and Options (Cont'd)

KEY : S : Standard Feature | O : Optional Feature; Additional costs may apply | D : Dependent; Availability is dependent on selection of another option | — : Not Available

ELECTRICAL					
<ul style="list-style-type: none"> Spyder Controls Multiplex System Firefly Integrations Eclipse Module ¹ NEW Centralized 10" Spyder System Main Monitor Passenger Console Spyder System Color Touchscreen Interior Entryway Spyder System Color Touchscreen Exterior Spyder System Color Touchscreen Additional Spyder Color Touchscreens Throughout Coach 10.0-Kilowatt Onan® Quiet Diesel Generator 	<ul style="list-style-type: none"> Generator Slide Tray 2,000-Watt Pure Sine Wave Inverter Charger with Auto-Gen Start and Interior Remote Control ² (3) 15,000-BTU Low Profile Air Conditioners with Heat Pumps and Condensation Drains 50-Amp Shore Power with Powered Retract Reel Auxiliary Solar Port Energy Management System HD Over-the-air Antenna Park Cable and Ground Satellite Hook-up 	<ul style="list-style-type: none"> Prep for In-motion Satellite Blu-ray™ Player Satellite Receiver ³ 12-Volt Breaker Panel 12-Volt Disconnect Switch Rotary Disconnect Switches for House Batteries, Chassis Batteries, and Inverter Ground Fault Circuit Interrupter (GFCI) Outlets at Galley, Lavatories, and Sewer Bay 110-Volt Exterior Receptacle Surge Guard® Transfer Switch USB Receptacles Throughout Coach 			
ELECTRICAL OPTIONS					
Heating and Cooktop Power Source	Liquid Propane (LP) Coach ⁴	35 CH	37 BH	40 IH	44 OH
	Hydronic Heating & Electronic Appliance Equipped Coach ⁵ UPDATED	S	O	O	S
House Batteries	(6) 6-Volt, 230-Amp Hours Flooded Lead-Acid House Batteries	S	S	S	S
	(6) 6-Volt, 210-Amp Hours Extended Cycle AGM House Batteries	O	O	O	O
	(3) 12-Volt, 270-Amp Hours Lithium House Batteries	O	O	O	O
	Battery Slide-out Tray ⁶	D	D	D	D
Space Heating	(1) 30,000-BTU and (1) 20,000-BTU Ducted Furnaces ⁷	D	D	—	—
	(2) 30,000-BTU Ducted Furnaces ⁷	—	—	D	—
	Aqua-Hot® 450D Heat Exchanger ⁸	D	D	D	S
Solar Panels	Prep for Solar Panels ⁹	O	O	O	O
	(3) 200-Watt Solar Panels with (1) 30-Amp Controller ¹⁰	O	O	O	O
	(6) 200-Watt Solar Panels with (2) 30-Amp Controllers ¹¹	—	O	O	O
In-motion Satellite Dish ¹²		O	O	O	O
Prewiring for Winegard® Trav'ler™ Satellite		O	O	O	O
Internet & Phone	Prep for Wi-Fi Booster ¹³	D	D	D	D
	Wi-Fi Booster ¹⁴	O	O	O	O
	Starlink® Pro ¹⁵ NEW	O	O	O	O

¹ Download the accompanying Vegatouch app to control your coach locally offline using Bluetooth and remotely anywhere there's internet for the coach module (Local control only for slides and awning). Includes a free 90-day remote access trial.

² Automatic generator start capabilities controlled through Spyder Controls Multiplex System.

³ Requires subscription.

⁴ Propane is used to power the ducted furnaces, the water heater, and the liquid propane cooktop.

⁵ Replaces the ducted furnaces, the Truma AquaGo™ water heater, and the liquid propane cooktop with an Aqua-Hot® heat exchanger and induction cooktops. Removes LPG tank. Formerly known as "All-Electric Coach".

⁶ Standard with flooded and extended cycle AGM batteries. Not available with lithium batteries.

⁷ Standard with LP coach option.

⁸ Replaces ducted furnaces when hydronic heating & electronic appliance equipped coach option is selected. Aqua-Hot® heat exchanger provides both heated air and water.

⁹ Includes docking ports for aftermarket solar panels.

¹⁰ Not combinable with Starlink Pro option on 44 OH.

¹¹ Not combinable with Starlink Pro option on 37 BH or 40 IH.

¹² High-definition programming is not available on a domed satellite antenna unless you subscribe to DISH Network®.

¹³ Standard unless Starlink Pro is optioned.

¹⁴ Not combinable with Starlink Pro option.

¹⁵ Not combinable with Wi-Fi Booster option. Requires subscription.

EXTERIOR					
<ul style="list-style-type: none"> Full-body Paint with (4) Layers of Clear Coat Single-colored Slide-out Endwalls High Performance Protective Film on Front Cap and Select Areas Girard® Powered Door Awning with Integrated LED Lighting Girard® Manual Window Awning Package Girard® Slide-out Toppers Side-swinging Exterior Storage Doors with Gas Shocks Lockable Handles on Compartment Doors Motion-sensor Lights in Cargo Bay 	<ul style="list-style-type: none"> 120-Volt and 12-Volt Outlets Inside Cargo Bays Pass-through Basement Storage Charcoal Carpet Cargo Walls Fiberglass Reinforced Plastic Basement Floor Frameless, Dual-Pane Windows Exterior Patio Light Daytime Running Lights Docking Lights Chrome Power Heated Side-View Mirrors with Integrated Cameras Exterior TV with Soundbar 	<ul style="list-style-type: none"> Fast Charge USB ports within Exterior TV Compartment Lightweight Entry Door with Integrated Screen Deadbolt Front Entrance Lock Lighted Entry Door Grab Handle Automatic Stainless Steel Double Entry Step Keyless Entry System for Front Entrance and Component Doors Mud Flaps Custom Rock Guard 			
EXTERIOR OPTIONS					
Patio Awnings	(1) Girard® Side-mounted Powered Patio Awning with Integrated LED Lighting	35 CH	37 BH	40 IH	44 OH
	(2) Girard® Roof-mounted Powered Patio Awnings with Integrated LED Lighting and Dual Pitch Feature	S	S	S	S
Slide Trays ¹	(1) Manual Storage Compartment Slide-out Tray	O	O	O	O
	(2) Manual Storage Compartment Slide-out Trays	—	—	O	O
Outdoor Electric Grill ²		—	—	D (O)	D (O)
Lippert™ On-The-Go™ Telescoping Ladder ³		O	O	O	O

EXTERIOR OPTIONS					
Patio Awnings	(1) Girard® Side-mounted Powered Patio Awning with Integrated LED Lighting	35 CH	37 BH	40 IH	44 OH
	(2) Girard® Roof-mounted Powered Patio Awnings with Integrated LED Lighting and Dual Pitch Feature	S	S	S	S
Slide Trays ¹	(1) Manual Storage Compartment Slide-out Tray	O	O	O	O
	(2) Manual Storage Compartment Slide-out Trays	—	—	O	O
Outdoor Electric Grill ²		—	—	D (O)	D (O)
Lippert™ On-The-Go™ Telescoping Ladder ³		O	O	O	O

¹ Trays slide out on both sides of motorhome.

² Option requires at least (1) storage compartment slide-out tray.

³ All units will ship with a Lippert™ On-The-Go™ Prepped Receiver installed.

INTERIOR					
<ul style="list-style-type: none"> Handcrafted Overhead Cabinetry Solid Surface Step Well Powered Step Well Cover Storage Compartment Within Entry Steps Recessed Step Well Lighting Living Area TV Solid Surface Galley Countertop Treated Carpet in Slide-out Floors 	<ul style="list-style-type: none"> Handcrafted Slide-out Fascia Soft Touch Vinyl Ceiling Dimmable LED Lighting Prep for Washer and Dryer Carbon Monoxide Detector LPG Leak Detector Smoke Detector Fire Extinguisher 	<ul style="list-style-type: none"> Solar and Privacy Shades Soft-closing Drawers Powered Roof Vents Central Vacuum System with VacPan® Automatic Dustpan Interior Grab Handle at Entry Door Egress Windows Throughout Coach 			
INTERIOR OPTIONS					
Interior Décor Packages	Capri	35 CH	37 BH	40 IH	44 OH
	Tide Pool NEW	O	O	O	O
	Stallion NEW	O	O	O	O
Upholstry Fabrics	Ultrafabrics® Tottori Tatami Mat ² NEW	D	D	D	D
	Ultrafabrics® Tottori Rice Paper ³ NEW	D	D	D	D
Cabinetry Color	Shadow	O	O	O	O
	Sandstone NEW	O	O	O	O
	White Linen NEW	O	O	O	O
	Platinum NEW	O	O	O	O
	Black Truffle NEW	O	O	O	O
Floor Tiles	Sweden Alps Glazed Porcelain Tile NEW	O	O	O	O
	Editorial Volakas Glazed Porcelain Tile NEW	O	O	O	O
Standalone Living Area Fireplace		O	O	O	O
Stacked Washer & Dryer		O	O	O	O
Gold Heat® Dual Zones Heated Tile Floor ⁴		O	O	O	O

INTERIOR OPTIONS					
Interior Décor Packages	Capri	35 CH	37 BH	40 IH	44 OH
	Tide Pool NEW	O	O	O	O
	Stallion NEW	O	O	O	O
Upholstry Fabrics	Ultrafabrics® Tottori Tatami Mat ² NEW	D	D	D	D
	Ultrafabrics® Tottori Rice Paper ³ NEW	D	D	D	D
Cabinetry Color	Shadow	O	O	O	O
	Sandstone NEW	O	O	O	O
	White Linen NEW	O	O	O	O
	Platinum NEW	O	O	O	O
	Black Truffle NEW	O	O	O	O
Floor Tiles	Sweden Alps Glazed Porcelain Tile NEW	O	O	O	O
	Editorial Volakas Glazed Porcelain Tile NEW	O	O	O	O
Standalone Living Area Fireplace		O	O	O	O
Stacked Washer & Dryer		O	O	O	O
Gold Heat® Dual Zones Heated Tile Floor ⁴		O	O	O	O

¹ Located in living area and bedroom.

² Always paired with Capri Interior Fabric Suite.

³ Always paired with Tide Pool or Stallion Interior Fabric Suites.

⁴ No heated tile in rear bath on 37 BH.

Specifications, Features, and Options (Cont'd)

KEY : S : Standard Feature | O : Optional Feature; Additional costs may apply | D : Dependent; Availability is dependent on selection of another option | - : Not Available

DRIVER'S COMPARTMENT						
<ul style="list-style-type: none"> • Ultrafabrics® Tottori Power Driver and Passenger Seats • Dual Driver And Passenger Seat Armrests • Swivel Bases for Driver and Passenger Seats • Powered Passenger Seat Footrest • Integrated Seat Belts on Driver and Passenger Seats • Tilt and Telescoping Steering Wheel with Integrated Controls • Adjustable Accelerator and Brake Pedals • Wraparound Dash with Graphite Accents • Mounted Dash Fans • Cupholders on Driver and Passenger Side • Digital Dash Cluster • (1) Center Storage Drawer 	<ul style="list-style-type: none"> • Generator Start & Stop Rocker Switch • USB Dash Receptacles • 12-Volt Dash Receptacle • Backlit Dash Rocker Switches • Passenger Console Wireless Phone Charger • Driver and Passenger Map Lights • One-piece Panoramic Windshield • Single-motor Intermittent Windshield Wipers • Automatic LED Headlights • Side-view Cameras ¹ • Color Back-up Camera • 10" High Definition LED Multichannel Camera Monitor 	<ul style="list-style-type: none"> • Stereo with AM & FM Radio, CD Player, and Satellite Radio ² • Ceiling Mounted Speakers • Overhead Cabinetry with Wooden Panel Doors • Auxiliary Start Switch • Concealed Air Horn • Manual Opening Driver Side Window • Solid, Non-opening Passenger Side Window • Powered Solar and Privacy Windshield Shade • Manual Solar and Privacy Shades on Side Windows 	35 CH	37 BH	40 IH	44 OH
DRIVER'S COMPARTMENT OPTIONS						
Blind Spot Monitoring System		O	O	O	O	
In-dash Navigation System		O	O	O	O	
Front Overhead TV		O	O	O	O	
Electric Front Overhead Drop-Down Bunk ³	NEW	O	O	O	O	

¹ Integrated within side-view mirrors and activated by turn signals.

² Subscription required for satellite radio.

³ Mattress measures 72" x 30". Decreases overhead storage capacity. Maximum weight limit of drop-down bunk is 250 pounds. Now includes telescoping ladder.

BEDROOM						
<ul style="list-style-type: none"> • Under Bed Storage • Bedside Windows • Overhead Cabinets with Headboard • Bed Comforter with Throw Pillows 	<ul style="list-style-type: none"> • Handcrafted Privacy Door • LED Reading Lights • Nightstand with Solid Surface Tops • Mounted Bedroom TV 	<ul style="list-style-type: none"> • Centralized Entertainment Center ¹ • Ceiling Fan • Laundry Hamper 	35 CH	37 BH	40 IH	44 OH
BEDROOM OPTIONS						
Mattress	Memory Foam King Mattress (72" x 80") with Power Smart Lift	S	-	-	-	
	Memory Foam Queen Mattress (60" x 80") with Power Smart Lift	O	-	-	-	
	Memory Foam King Mattress (72" x 80")	-	S	S	S	
	Memory Foam Queen Mattress (60" x 80")	-	O	O	O	
Bedroom Storage	Floor-to-ceiling Closet Space	S	-	S	-	
	Wardrobe with Drawers Underneath	-	S	-	-	
	Walk-in Closet	-	-	-	S	
Safe		O	O	O	O	
Bedroom Egress Door		O	O	O	O	

¹ Houses Blu-ray™ player, satellite receiver, and cable TV hook-up.

KITCHEN						
<ul style="list-style-type: none"> • 17-Cubic Foot Smart Convection Microwave with Air Fry • Double Bowl Kitchen Sink with Single Lever Faucet and Pull-down Sprayer • Built-in Soap Dispenser 	<ul style="list-style-type: none"> • Galley Overhead Cabinets with Pull-out Drawers • Panoramic Galley Window • Task Lighting 	<ul style="list-style-type: none"> • Toe Kick Lighting • Full Tile Backsplash • Solid Surface Galley Countertop, Sink, and Cooktop Cover 	35 CH	37 BH	40 IH	44 OH
KITCHEN OPTIONS						
Refrigerator	22-Cubic Foot Stainless Steel Residential Refrigerator with French Doors and Bottom Freezer ¹	S	-	-	-	
	25-Cubic Foot Stainless Steel Residential Refrigerator with French Doors and Bottom Freezer ¹	-	S	S	S	
Cooking Appliances	Three-Burner Liquid Propane Cooktop ²	D	D	D	-	
	Two-Burner Induction Cooktop ³	D	D	D	S	
Drawer-style Dishwasher		O	O	O	O	
Manual Release Expand-An-Island		-	S	S	S	

¹ Refrigerator volume is approximated.

² Standard with LP Coach option.

³ Replaces three-burner liquid propane cooktop when hydronic heating & electronic appliance equipped coach option is selected.

BATHROOM						
<ul style="list-style-type: none"> • Solid Surface Lavatory Top • Handheld Shower Head with Slide Bar • Shower Skylight 	<ul style="list-style-type: none"> • Shower LED Light with Sliding Cover • Towel and Toilet Paper Holders • Roof Vent Fan 	• Base Cabinet	35 CH	37 BH	40 IH	44 OH
BATHROOM OPTIONS						
Number of Bathrooms	(1) Bathroom	S	-	-	-	
	(1) Bathroom and (1) Half-bath ¹	-	S	S	S	
Master Bathroom Sink	(1) Porcelain Master Bathroom Sink	-	S	-	-	
	(2) Porcelain Master Bathroom Sinks	S	-	S	S	
Shower	One-Piece Molded Fiberglass Shower (28.5" x 40.5")	S	-	S	S	
	One-Piece Molded Fiberglass Shower (31.75" x 40")	-	S	-	-	
Toilet	(1) Macerator Toilet	S	-	-	-	
	(1) Gravity Flush Toilet and (1) Macerator Toilet	-	S	S	S	
Master Bathroom Medicine Cabinet	Medicine Cabinet with Tri-view Vanity Mirror	S	-	S	S	
	Mirrored Medicine Cabinet	-	S	-	-	

¹ All half-baths contain a toilet and a solid surface countertop with a single porcelain sink.

DINETTE AND LIVING AREA		SLEEPS	SEATS	SEATBELTS	35 CH	37 BH	40 IH	44 OH
Driver Side Dinette	75" Booth Dinette-Sleeper ¹	1	4	2	-	S	-	-
	75" U-shaped Dinette UPDATED	-	4	2	-	O	-	-
	75" Dinette with Chairs ²	-	2	-	-	O	-	-
Driver Side Furniture	74" Air Coil Sofa Bed ³	1	2	2	S	S	S	-
	74" Theater Seating	-	2	2	O	O	O	-
	89" Air Coil Sofa Bed ⁴	1	3	3	-	-	-	S
	89" Theater Seating	-	2	2	-	-	-	O
Passenger Side Dinette	75" Dinette with Chairs and Lift TV ² UPDATED	-	2	-	S	-	-	-
	75" Dinette Bar with Lift TV ⁵	-	2	-	O	-	-	-
	72" Booth Dinette-Sleeper ⁶	1	4	2	-	-	S	-
	72" Dinette with Chairs ² UPDATED	-	2	-	-	-	O	-
	72" U-shaped Dinette	-	4	2	-	-	O	-
	75" Booth Dinette-Sleeper ⁷	1	4	2	-	-	-	S
	75" U-shaped Dinette	-	4	2	-	-	-	O
75" Dinette with Chairs ² UPDATED	-	2	-	-	-	-	O	
Passenger Side Furniture	64" DE Sofa Bed with Lift TV ⁸	1	2	2	-	S	-	-
	68" DE Sofa Bed with Lift TV ⁹	1	2	2	-	-	S	-
	68" Air Coil Sofa Bed with Lift TV ¹⁰	1	2	2	-	-	O	-
	84" DE Sofa Bed with Lift TV ¹¹	1	3	3	-	-	-	S
	84" Air Coil Sofa Bed with Lift TV ¹²	2	3	3	-	-	-	O
	Recliner and Lift TV ¹³	-	1	-	-	O	O	O
	Recliner and Lift TV with Fireplace ¹³	-	1	-	-	O	O	O

¹ Piece of furniture converts to 72" x 45" sleeping area.

² Formerly known as "Dinette Computer Workstation". The printer bump-out was removed for more leg room. The keyboard and printer trays have been converted to a drawer and a fixed shelf to maximize storage. Includes (2) freestanding accent chairs and (2) wooden folding chairs.

³ Mattress measures 72" x 52" and includes internal pump. Cannot option air coil sofa on both driver and passenger sides.

⁴ Mattress measures 72" x 59" and includes internal pump. Cannot option air coil sofa on both driver and passenger sides.

⁵ Includes (2) freestanding accent chairs and (2) wooden folding chairs. Lift TV deletes cabinetry over dinette.

⁶ Piece of furniture converts to 69" x 45" sleeping area.

⁷ Piece of furniture converts to 72" x 45" sleeping area.

⁸ Piece of furniture converts to 57" x 49" sleeping area. Lift TV deletes cabinetry over furniture.

⁹ Piece of furniture converts to 61" x 49" sleeping area. Lift TV deletes cabinetry over furniture.

¹⁰ Mattress measures 72" x 52" and includes internal pump. Cannot option air coil sofa on both driver and passenger sides. Lift TV deletes cabinetry over furniture.

¹¹ Piece of furniture converts to 77" x 49" sleeping area. Lift TV deletes cabinetry over furniture.

¹² Mattress measures 72" x 59" and includes internal pump. Cannot option air coil sofa on both driver and passenger sides. Lift TV deletes cabinetry over furniture.

¹³ Lift TV deletes cabinetry over furniture.

1

YEAR OR 12,000 MILES
LIMITED WARRANTY

5

YEARS OR 50,000 MILES
DELAMINATION
LIMITED WARRANTY

10

YEARS OR 50,000 MILES
CONSTRUCTION
LIMITED WARRANTY

1

YEAR COACH
ROADSIDE SERVICE

∞

ONGOING
CUSTOMER SUPPORT

FOR SALES CALL 256-356-8661 AND PARTS & SERVICE CALL 256-356-0261 OR VISIT TIFFINMOTORHOMES.COM

105 2ND ST NW RED BAY, AL 35582  



TIFFIN

MOTORHOMES

All trademarks and logos are owned or used under license by Tiffin Motor Homes, Inc. and include, but are not limited to: TIFFIN®, MANY ADVENTURES. ONE DREAM™, ALLEGRO®, ALLEGRO BREEZE®, ALLEGRO RED®, PHAETON®, ALLEGRO BUS®, ZEPHYR®, WAYFARER®, ROUGHING IT SMOOTHLY®, OPEN ROAD®, POWERGLIDE®, CAHABA®, BYWAY™, and associated logos and emblems. Unauthorized use of any trademark of Tiffin Motor Homes, Inc. is strictly prohibited.

© Copyright 2023 Tiffin Motor Homes, Inc.

For all information concerning the limited warranty provided by Tiffin, please refer to the full written limited warranty set forth on the Tiffin website or held by our authorized dealerships. Please note, some interior furnishings not included. Revised: 9/29/23



LaMesaRV.com
800-496-8778